



# midas

## MILEAGE

K E R A L A D E S I G N S 2 0 1 9



## Grow with MIDAS MILEAGE...

Get the sales and profit growth you want in your retreading business by giving your customers MIDAS MILEAGE. Our high mileage compounds are designed to lower a fleet owners running cost by maximizing mileage per retread tyre.



Founded in 1969, MIDAS has grown to become Asia's largest supplier of Tyre Retreading Materials. We have focused on constantly improving compounds to provide customers with the best mileage.



## ISO 9001:2015, ISO 14001:2015

Our quality system is certified by VEXIL and UKAS, to ensure that we provide you with consistent materials, on time, every time.



# PRODUCTS

## Precured Treads

Made from high mileage compounds, our treads have been accepted the world over and tested on all road conditions.



## Conventional (Hot) Rubber

Increased scorch safety to maximise shelf life. Different compounds available for different uses including (Truck, Tractor and OTR). Available in customer specified sizes.



## Bonding Gum

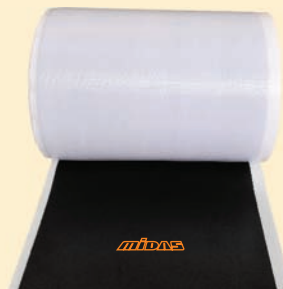
Our gum is made from 100% natural rubber to increase tack. Available in customer specified sizes also. Different types of Gum are available for both Precured and Hot process. Can be used to fill nail holes and repair injured parts of casing.

**FAST CURE**  
99°C

125°C

**S P**  
125°C

**Fast cure :**  
Special gum that can be used to reduce cure time. Please consult us before using.



## Black Vulcanising Solution

Available as **RTU (Ready to use)** and **ULTRA (Thin)** solution. Compatible with both precured and hot process.



## Rope Rubber

To be used in rubber extruder guns to repair rasping area. Provides excellent process safety and tack.



## Cushion Repair Compound (Hot process)

For industrial and agricultural use also. Can be used for submersible pumps.





# midas arcus



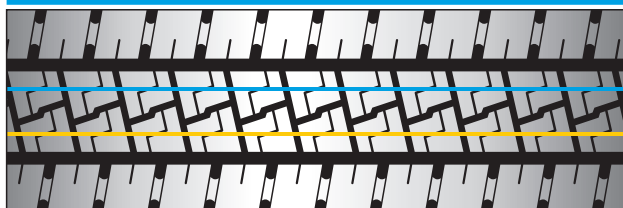
**UPTO  
DOUBLE  
TREAD LIFE  
AND  
SAVES AT LEAST  
8.5% FUEL**



While using **midas  arcus** Mr. Kaimul Haque Barbhuiya from Assam has reported double the mileage of a new tyre.

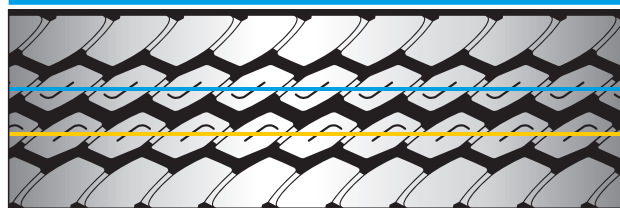
Mr. Kaimul Haque Barbhuiya from Assam has reported double the mileage of a new tyre.

## ALD



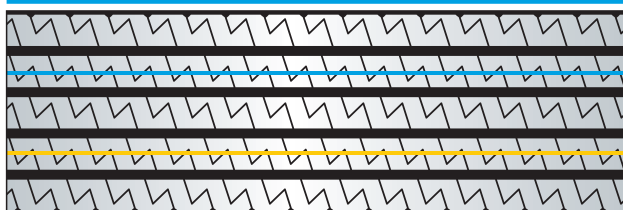
Name	Length (inch)	Base width (mm)	Tread depth (mm)	Base thickness (mm)	Approx. weight (kgs)
10.00 R 20	128	230	13.5	3.5	12.300
10.00 R 20	128	220	13.5	3.5	11.500

## MVN



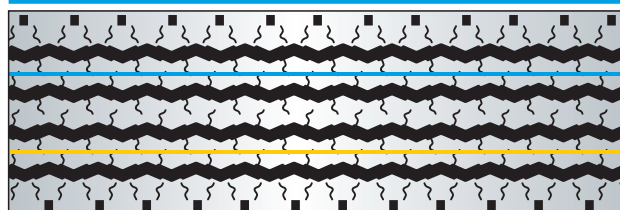
Name	Length (inch)	Base width (mm)	Tread depth (mm)	Base thickness (mm)	Approx. weight (kgs)
10.00 R 20	128	230	13.5	3.8	12.100
10.00 R 20	128	220	13.5	3.8	11.400

## M 27



Name	Length (inch)	Base width (mm)	Tread depth (mm)	Base thickness (mm)	Approx. weight (kgs)
10.00 R 20	128	220	13.5	3.0	12.000

## R 2



Name	Length (inch)	Base width (mm)	Tread depth (mm)	Base thickness (mm)	Approx. weight (kgs)
10.00 R 20	128	220	15.0	4.0	13.000

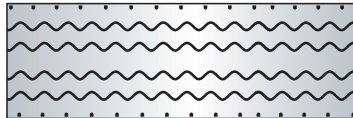
# RIB, LUG & SEMILUG DESIGNS

## AJAX



Name	Length (inch)	Base width (mm)	Total thickness (mm)	Approx. weight (kgs)
10.00 x 20 <b>Super</b>	130	210	20.5	14.000
10.00 x 20	130	208	17.0	12.000
10.00 x 20 <b>Super</b>	130	205	17.0	11.800
9.00 x 20 <b>Super</b>	127	187	21.5	13.000
9.00 x 20	127	187	17.5	10.700
8.25 x 20	121	175	17.0	9.700
8.25 x 20	121	168	17.0	9.000
8.25 x 16	105	175	17.0	8.400
8.25 x 16	103	168	17.0	7.700
8.25 x 16	103	165	15.5	7.000
7.50 x 16	99	156	16.5	6.500
6.00 x 16 <b>Long</b>	90	130	15.5	4.500
6.00 x 16 <b>Long</b>	90	125	14.0	4.000
6.00 x 16 <b>Long</b>	90	120	14.0	4.000

## ARIUS



Name	Length (inch)	Base width (mm)	Total thickness (mm)	Approx. weight (kgs)
10.00 x 20	130	208	18.0	12.300
9.00 x 20	124	190	21.0	13.000

## FLEET TRACK



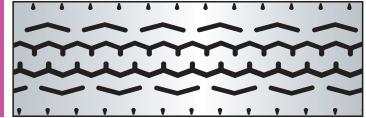
Name	Length (inch)	Base width (mm)	Total thickness (mm)	Approx. weight (kgs)
8.25 x 16	103	174	16.0	7.300
7.50 x 16	99	160	17.0	6.500
7.00 x 15	93	150	16.5	5.500
MARUTI / ACE	66	124	13.0	2.500

## NH



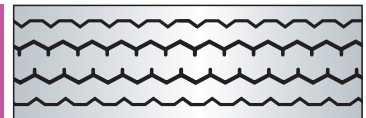
Name	Length (inch)	Base width (mm)	Total thickness (mm)	Approx. weight (kgs)
10.00 x 20	130	204	18.0	12.000

## PORT MILER



Name	Length (inch)	Base width (mm)	Total thickness (mm)	Approx. weight (kgs)
12.00 x 20	139	245	18.0	16.000
12.00 x 20	136	245	18.0	15.600
11.00 x 20	133	245	18.0	15.200
11.00 x 20	133	235	18.5	14.800
11.00 x 20	133	225	19.5	14.400
11.00 x 20	133	220	18.5	13.600
10.00 x 20	131	215	19.5	14.200
10.00 x 20	130	210	18.5	13.000
10.00 x 20	130	205	20.5	14.000

## VIKING




Name	Length (inch)	Base width (mm)	Total thickness (mm)	Approx. weight (kgs)
10.00 x 20 <b>Super</b>	130	205	18.5	12.800
10.00 x 20	130	200	18.5	12.600
10.00 x 20	130	197	18.5	12.600
8.25 x 20	121	180	16.0	9.100
8.25 x 20	121	172	17.0	9.200
8.25 x 16	104	172	17.0	8.000
7.50 x 16	99	158	16.0	6.600
7.50 x 16 <b>Long</b>	99	150	14.5	5.400
7.00 x 15	93	140	15.0	5.300


## MINES SPECIAL




Name	Length (inch)	Base width (mm)	Total thickness (mm)	Approx. weight (kgs)
12.00 x 24	147	240	19.0	17.000
11.00 x 20	133	240	19.0	15.400
11.00 x 20	133	225	19.0	14.400
11.00 x 20	133	220	19.0	14.100
10.00 x 20	130	215	20.0	13.400


## RIB, LUG & SEMILUG DESIGNS

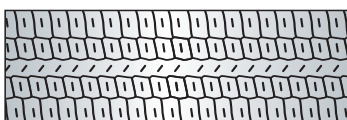
MINES SUPER				
Name	Length (inch)	Base width (mm)	Total thickness (mm)	Approx. weight (kgs)
8.25 x 20	121	175	17.0	8.900
8.25 x 20	121	168	17.0	8.400
9.00 x 16	111	190	18.5	9.300
8.25 x 16	103	175	17.0	7.700
8.25 x 16	103	168	17.0	7.200


RM 1				
Name	Length (inch)	Base width (mm)	Total thickness (mm)	Approx. weight (kgs)
8.25 x 20	121	175	18.0	8.900
8.25 x 16	104	175	18.0	7.700
7.50 x 16	99	160	16.5	6.400

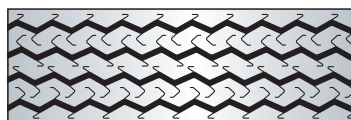
SEMI LUG				
Name	Length (inch)	Base width (mm)	Total thickness (mm)	Approx. weight (kgs)
11.00 x 20 <b>Super</b>	133	215	19.5	13.700
10.00 x 20	130	208	21.0	13.600
9.00 x 20 <b>Super</b>	127	187	22.0	12.300
8.25 x 20	121	175	18.0	9.600
8.25 x 20	121	168	18.5	9.400
9.00 x 16 <b>M.W.</b>	111	187	16.5	8.100
8.25 x 16	105	175	18.0	8.200
8.25 x 16	103	168	18.5	8.000
7.50 x 16	100	160	18.0	7.200
7.50 x 16 <b>Long</b>	99	150	17.0	6.200
6.00 x 16 <b>Long</b>	90	132	15.5	4.600
ACE	66	124	16.0	3.200

## LCV & CAR DESIGNS

APOLLO				
Name	Length (inch)	Base width (mm)	Total thickness (mm)	Approx. weight (kgs)
7.00 x 15	93	145	14.0	4.600
DOST	82	145	14.0	4.100

ASTRO				
Name	Length (inch)	Base width (mm)	Total thickness (mm)	Approx. weight (kgs)
F 78 x 15	87	176	15.0	5.800
F 78 x 15	87	165	13.5	4.500
F 78 x 15 <b>L.W.</b>	87	156	12.0	4.100
CAR <b>Long</b>	82	138	13.0	3.700
ACE <b>Long</b>	66	125	13.5	2.800
ACE <b>Long</b>	66	120	12.5	2.300

AUTO				
Name	Length (inch)	Base width (mm)	Total thickness (mm)	Approx. weight (kgs)
4.00 x 8	50	84	10.6	1.100

CAR M				
Name	Length (inch)	Base width (mm)	Total thickness (mm)	Approx. weight (kgs)
ACE <b>Long</b>	66	118	14.0	2.800
AMBASSADOR	82	114	12.3	3.000
4.50 x 10	60	107	15.0	2.400
4.50 x 10 <b>Super</b>	60	102	14.5	2.100
MARUTI	66	95	11.0	1.800
4.50 x 10	60	95	11.0	1.800
4.00 x 8	50	86	12.0	1.300
4.00 x 8	50	85	11.0	1.200

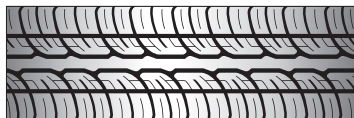
## LCV & CAR DESIGNS

### JEEP



Name	Length (inch)	Base width (mm)	Total thickness (mm)	Approx. weight (kgs)
6.00 x 16	90	132	14.5	4.100

### M 35



Name	Length (inch)	Base width (mm)	Total thickness (mm)	Approx. weight (kgs)
SUV	93	180	14.0	5.200
SUV	87	170	14.0	4.800

### NEW TRACTOR FRONT



Name	Length (inch)	Base width (mm)	Total thickness (mm)	Approx. weight (kgs)
7.50 x 16	99	160	18.0	5.900
6.00 x 16	90	132	17.0	4.100

### PCM



Name	Length (inch)	Base width (mm)	Total thickness (mm)	Approx. weight (kgs)
MARUTI	66	125	9.5	1.800

### PICKUP



Name	Length (inch)	Base width (mm)	Total thickness (mm)	Approx. weight (kgs)
7.00 x 15	93	145	14.0	4.500

### RADIAL



Name	Length (inch)	Base width (mm)	Total thickness (mm)	Approx. weight (kgs)
TATA	87	174	15.0	5.200

### R 4




Name	Length (inch)	Base width (mm)	Total thickness (mm)	Approx. weight (kgs)
CAR Long	93	185	13.0	5.300
CAR Long	87	173	14.0	5.000
CAR Long	93	165	12.5	4.300
CAR Long	90	145	13.0	3.800
CAR	66	115	12.5	2.200


### TRANSPORT




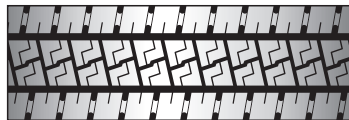
Name	Length (inch)	Base width (mm)	Total thickness (mm)	Approx. weight (kgs)
7.00 x 15 Super	93	148	16.7	6.200
7.00 x 15 M.W.	93	148	15.0	5.400

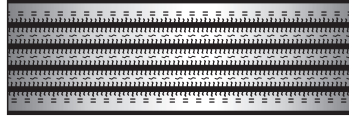
## RADIAL DESIGNS


ADH				
				
Name	Length (inch)	Base width (mm)	Total thickness (mm)	Approx. weight (kgs)
11.00 x 20	132	230	17.5	12.800
10.00 x 20	130	220	17.3	11.800
9.00 x 20	124	190	18.0	10.000
8.25 x 20 <b>Super</b>	121	180	19.5	10.400
8.25 x 16 <b>Super</b>	104	180	19.5	8.800


MAXIMUS				
				
Name	Length (inch)	Base width (mm)	Total thickness (mm)	Approx. weight (kgs)
315/80 R 22.5	133	265	20.0	16.700
315/80 R 22.5	133	260	18.0	15.000
11.00 x 20 <b>H.W.</b>	133	250	20.0	15.000
11.00 x 20 <b>L.W.</b>	133	250	17.5	14.000
11.00 x 20 <b>H.W.</b>	133	240	20.0	15.000
11.00 x 20 <b>L.W.</b>	133	240	17.5	13.300
11.00 x 20 <b>H.W.</b>	133	235	19.0	13.500
11.00 x 20 <b>L.W.</b>	133	235	17.5	12.500
11.00 x 20	133	230	20.0	14.300
11.00 x 20 <b>H.W.</b>	133	225	20.0	13.800
11.00 x 20 <b>L.W.</b>	133	225	17.5	12.200
10.00 x 20	131	220	20.0	13.200
10.00 x 20 <b>H.W.</b>	133	215	18.5	12.600
10.00 x 20 <b>L.W.</b>	133	215	17.5	11.500
10.00 x 20 <b>Super</b>	130	210	20.0	13.000


M 30				
				
Name	Length (inch)	Base width (mm)	Total thickness (mm)	Approx. weight (kgs)
295/80 R 22.5	133	240	16.0	13.500
295/80 R 22.5	133	230	17.0	13.000
10.00 x 20	130	225	16.0	12.300
10.00 x 20	130	220	16.0	12.000
10.00 x 20	130	215	16.0	11.700


ALD				
				
Name	Length (inch)	Base width (mm)	Total thickness (mm)	Approx. weight (kgs)
11.00 x 20	133	240	16.3	13.000
10.00 x 20 <b>Super</b>	130	230	20.0	14.600
10.00 x 20	130	230	17.0	12.600
10.00 x 20 <b>Super</b>	130	220	20.0	14.200
10.00 x 20	130	220	17.0	12.000

MRK				
				
Name	Length (inch)	Base width (mm)	Total thickness (mm)	Approx. weight (kgs)
235/75 R 17.5	98	210	17.5	8.900
235/75 R 17.5	98	205	15.0	7.700

MVN				
				
Name	Length (inch)	Base width (mm)	Total thickness (mm)	Approx. weight (kgs)
10.00 x 20	130	230	17.3	12.300
10.00 x 20 <b>Super</b>	130	220	17.3	11.800

R2 S				
				
Name	Length (inch)	Base width (mm)	Total thickness (mm)	Approx. weight (kgs)
12.00 x 20	129	250	21.0	16.400

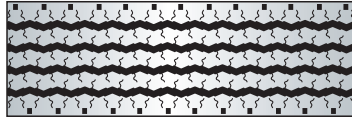
RM 16				
				
Name	Length (inch)	Base width (mm)	Total thickness (mm)	Approx. weight (kgs)
11.00 x 20	133	240	21.0	16.600

RM 17				
				
Name	Length (inch)	Base width (mm)	Total thickness (mm)	Approx. weight (kgs)
11.00 x 20	133	240	20.0	15.100



## RADIAL DESIGNS

### R 2



Name	Length (inch)	Base width (mm)	Total thickness (mm)	Approx. weight (kgs)
315/80 R 22.5	133	255	18.5	15.600
295/80 R 22.5	133	250	18.0	14.700
11.00 x 20	133	245	17.5	14.600
11.00 x 20	131	240	17.5	13.500
11.00 x 20	133	235	18.0	13.200
11.00 x 20	133	230	18.0	13.600
10.00 x 20	130	220	19.0	13.500
10.00 x 20	130	215	18.0	12.500
10.00 x 20	130	210	19.0	12.200
235/75 R 17.5	102	200	18.5	9.200
9.00 x 20	127	195	18.5	11.200
8.25 x 20	121	185	17.0	9.600
8.25 x 20	121	175	15.3	8.000
8.25 x 16	103	175	15.3	6.700
7.00 x 16	96	146	14.5	4.900

### GRML



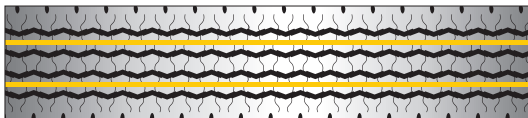
Name	Length (inch)	Base width (mm)	Total thickness (mm)	Approx. weight (kgs)
Spl. Application	152	320	24.0	23.800
Spl. Application	152	290	22.0	20.800

### Z LUG



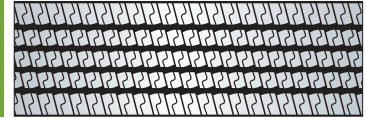
Name	Length (inch)	Base width (mm)	Total thickness (mm)	Approx. weight (kgs)
11.00 x 20	133	250	18.0	14.000

### M 9\*



Name	Length (inch)	Base width (mm)	Total thickness (mm)	Approx. weight (kgs)
315/80 R 22.5	135	270	16.5	15.000
315/80 R 22.5	135	260	16.5	14.500
295/80 R 22.5	133	250	16.5	13.500
11.00 x 20	133	240	16.5	13.000
10.00 x 20	129	240	16.5	12.600

### RM 30



Name	Length (inch)	Base width (mm)	Total thickness (mm)	Approx. weight (kgs)
315/80 R 22.5	130	265	20.0	16.700
295/80 R 22.5	135	250	20.0	16.400
11.00 x 20	133	240	20.0	15.400
11.00 x 20	133	230	20.5	15.500
10.00 x 20	130	230	20.5	15.200
10.00 x 20	130	220	20.0	13.800

### RM 31



Name	Length (inch)	Base width (mm)	Total thickness (mm)	Approx. weight (kgs)
295/80 R 22.5	135	250	20.0	16.000
11.00 x 20	133	240	20.0	15.000
10.00 x 20	130	220	24.0	16.100

### GPZH



Name	Length (inch)	Base width (mm)	Total thickness (mm)	Approx. weight (kgs)
12.00 x 24	413	270	36.0	87.000
12.00 x 24	413	260	23.0	57.000
11.00 x 20	133	250	26.0	20.000
11.00 x 20	133	240	25.0	17.000
11.00 x 20	133	230	25.0	16.000
10.00 x 20	130	215	23.0	14.500

## RADIAL SPECIAL

Name	Length (inch)	Base width (mm)	Total thickness (mm)	Approx. weight (kgs)
10.00 x 20	129	230	16.3	11.500
10.00 x 20	131	220	16.0	11.500
10.00 x 20	129	220	16.0	11.200
10.00 x 20	129	215	16.0	10.900

\*Over 1 lakh kilometers on good roads

\*Use only for RADIAL tyres

## HALF SKIRT ENVELOPES - STEAM BONDER



Sl. No.	Product Code	Tyre Size (Suggested)
1	52 x 28	14.00 x 25, 14.00 x 24
2	46 x 28	12.00 x 24, 12.00 R 24
3	44 x 28	12.00 x 20, 12.00 R 20
4	44 x 22	11.00 R 24, 315/80 R 22.5, 385/65 R 22.5
5	42 x 26	11.00 x 20, 10.00 x 20, 10.00 R 20, 295/80 R 22.5, 11.00 R 22.5
6	40 x 25	9.00 x 20, 9.00 R 20
7	38 x 25	8.25 x 20
8	35 x 20	7.50 x 20, 9.00 x 16
9	31 x 17	8.25 x 16, 6.50 x 20
10	31 x 18	7.50 x 16, 7.00 x 16, F78 x 15, 235/75 R 17.5
11	29 x 19	6.00 x 16, 7.00 x 15, 6.70 x 15, 195/70 R 15, 195/215 R 14, 185/85 R 16, 235 R 16
12	26 x 17	5.90 x 15, 165/195/205/215/235/70 R 15
13	25 x 16	5.20 x 14, 6.70 x 14, 155 R 13, 175 R 13, 6.40x13, 155/175/185/195/215/70 R 14, 165 D 14
14	21 x 12	4.50/5.65 x 12, 145 R 12, 145 R 13, 155/80 D 12, 165/80 D 12, 165/65 R 13
15	19 x 11	4.50 x 10
16	17 x 08	4.00 x 8

## FULL SKIRT ENVELOPES - ELECTRIC CHAMBER



ENVELOPES

midas

Sl. No.	Product Code	Tyre Size (Suggested)
1	52 x 21	14.00 x 25, 14.00 x 24
2	46 x 22	12.00 x 24, 12.00 R 24
3	44 x 19	11.00 R 24, 12.00 x 20
4	44 x 17	13.00 R 22.5, 385/65 R 22.5, 12.00 R 20
5	43 x 20	12.00 R 22.5, 315/80 R 22.5
6	42 x 17	11.00 x 20
7	42 x 19* GREEN	10.00 x 20, 10.00 R 20, 315/70 R 22.5, 295/80 R 22.5, 11.00 R 22.5
8	42 x 19	10.00 x 20, 10.00 R 20, 315/70 R 22.5, 295/80 R 22.5, 11.00 R 22.5
9	40 x 17	9.00 x 20, 9.00 R 20, 275/80 R 22.5, 10.00 R 22.5
10	38 x 20	8.25 x 20
11	35 x 13	9.00 x 16
12	35 x 16* GREEN	7.50 x 20, 8.25 x 16
13	35 x 16	7.50 x 20, 8.25 x 16
14	32 x 16	7.50 x 16, 7.00 x 16, 235/75 R 17.5
15	31 x 14	7.00 x 15
16	28 x 16	6.00 x 16, F78 x 15, 195 R 15, 195/215 R 14, 215 R 15, 185/85 R 16, 235 R 16
17	26 x 16	5.90 x 15, 165 R 15, 5.20 x 14, 6.00 x 14, 165 R 14, 165 D 14
18	22 x 11	155/80 D 12, 165/80 D 12, 165/65 D 13, 145 R 13, 4.50 x 12, 5.65 x 12, 145 R 12
19	19 x 09	4.50 x 10
20	17 x 08	4.00 x 8

\* Gives double the life

## DOUBLE ENVELOPE SYSTEM

The double envelope system can be used only with radial tyres. When this system is used no rim, curing bag or flap is required. This makes the work easier.

As vacuum and chamber pressure act evenly on all areas of the tyre the retreading process is better.

In the rim and curing bag system heat penetration is from outside whereas in the Double Envelope System heat penetrates from both sides. Hence curing time can be reduced improving productivity and reducing cost.



### Outer Envelope

Sl. No.	Product Code	Tyre Size (Suggested)
1	46 x 22	13.00 R 22.5
2	44 x 19	12.00 R 24
3	44 x 22	385/65 R 22.5, 12.00 R 20
4	43 x 20	365/80 R 20
5	42 x 19	11.00 R 24, 12.00 R 22.5, 315/80 R 22.5, 11.00 R 20, 445/65 R 19.5
6	40 x 18	315/70 R 22.5, 295/80 R 22.5, 11.00 R 22.5, 10.00 R 20
7	40 x 19	275/80 R 22.5, 275/70 R 22.5, 10.00 R 22.5
8	38 x 20	295/60 R 22.5, 9.00 R 20, 8.25 R 20, 305/70 R 19.5, 445/45 R 19.5
9	35 x 16	7.50 R 20, 285/70 R 19.5
10	35 x 20	7.00 R 20, 6.50 R 20
11	32 x 16	265/70 R 19.5, 245/70 R 19.5, 235/70 R 19.5, 9.00 x 16, 8.25 x 16
12	31 x 18	225/75 R 17.5, 215/75 R 17.5, 205/75 R 17.5, 245/75 R 16, 7.50 x 16, 7.00 x 16, 7.50 x 15
13	28 x 16	205/65 R 17.5, 225/75 R 16, 215/75 R 16, 205/75 R 16, 7.00 x 15, 6.50 x 16, 6.00 x 16
14	26 x 16	5.90 x 15, 165 R 15, 6.00 x 14, 185 R 14
15	22 x 11	6.50 x 10
16	19 x 09	4.50 x 10
17	17 x 08	4.00 x 8



## DOUBLE ENVELOPE SYSTEM

ENVELOPES

midas

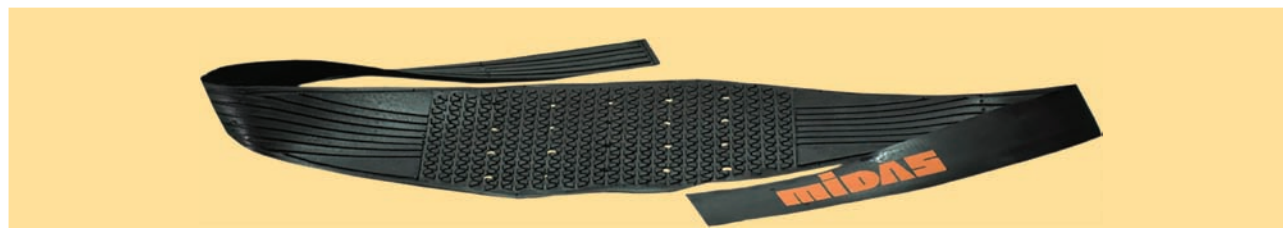


### Inner Envelope

Sl. No.	Product Code	Tyre Size (Suggested)
1	1100 x 480	15.00 R 22.5, 13.00 R 22.5, 12.00 R 22.5, 315/80 R 22.5, 315/75 R 22.5, 385/65 R 22.5, 305/70 R 22.5, 11.00 R 22, 12.00 R 20, 11.00 R 20, 425/55 R 19.5
2	1060 x 480	295/80 R 22.5, 275/80 R 22.5, 11.00 R 22.5, 10.00 R 20, 9.00 R 20
3	<b>780 x 400 (Coming soon)</b>	7.50 R 15, 7.00 R 16, 7.50 R 16, 8.25 R 16, 215/75 R 16, 225/75 R 16, 8 R 17.5, 8.5 R 17.5, 9 R 17.5, 205/75 R 17.5, 215/75 R 17.5, 235/75 R 17.5

### WICKING PAD

#### For Double Envelope System



Sl. No.	Product Code	Tyre Size (Suggested)
1	1250 x 175	12.00 R 24, 11.00 R 24, 15.00 R 22.5, 13.00 R 22.5 12.00 R 22.5, 11.00 R 22.5, 315/80 R 22.5 315/75 R 22.5, 385/65 R 22.5, 305/70 R 22.5 295/80 R 22.5, 275/80 R 22.5, 12.00 R 20, 11.00 R 20 10.00 R 20, 9.00 R 20, 425/55 R 19.5

## ARC - RIMLESS SYSTEM



### Outer Envelope

Outer Envelope skirt length extends **2.0 inches** below the tyre bead on each side.

Sl. No.	Product Code	Tyre Size (Suggested)
1	46 x 15	12.00 R 24, 11.00 R 24, 13.00 R 22.5
2	44 x 16	12.00 R 22.5, 315/80 R 22.5, 11.00 R 20, 10.00 R 20
3	43 x 14	385/65 R 22.5, 12.00 R 20, 365/80 R 20, 445/45 R 19.5
4	43 x 17	315/70 R 22.5, 295/80 R 22.5
5	42 x 14	11.00 R 24.5, 11.00 R 22.5, 10.00 R 22.5
6	42 x 17	275/70 R 22.5, 295/60 R 22.5
7	40 x 13	275/80 R 22.5, 9.00 R 20
8	35 x 12	7.50 R 20, 7.00 R 20, 6.50 R 20,245/70 R 19.5, 235/70 R 19.5
9	34 x 12	265/70 R 22.5, 265/70 R 19.5

## SUPER PREMIUM CURING BAGS



Sl. No.	Sizes
1	16.9 x 28
2	14.9 x 28
3	13.6 x 28
4	12.4 x 28
5	14.00 x 24/25
6	12.00 x 24
7	12.00 R 22.5
8	11.00 R 22.5
9	315/80R22.5
10	295/80R22.5
11	12.00 x 20
12	11.00 x 20
13	10.00 x 20 (ELECTRIC)
14	10.00 x 20
15	9.00 x 20
16	8.25 x 20
17	8.25 x 16
18	7.50 x 16
19	7.00 x 15
20	6.00 x 16
21	6.00 x 14
22	5.90 x 15
23	5.65 x 12
24	4.50 x 12
25	4.50 x 10
26	4.00 x 8

## PREMIUM INNER TUBES



Sl. No.	Sizes
1	10.00 x 20
2	9.00 x 20
3	8.25 x 16
4	7.50 x 16

## SPECIAL HEAT RESISTANT FLAPS

These flaps are made with the same material as envelopes for heat resistance during retreading. Our flaps protect the curing tubes and increase their life.



Flap Size (Inches)	Tyre Size (Suggested)
22.5 <b>Extra Wide</b>	385/65 R 22.5, 315/80 R 22.5, 12.00 R 22.5
22.5	295/80 R 22.5, 11.00 R 22.5
20 <b>Extra Wide</b>	12.00 R 20, 11.00 R 20, 10.00 R 20, 12.00 x 20, 11.00 x 20
20 <b>SUPER</b>	10.00 x 20, 9.00 x 20, 8.25 x 20
16 <b>LCV</b>	8.25 x 16, 7.50 x 16, 7.00 x 16, 7.50 x 15, 7.00 x 15

## M M CHANDY & CO.

- Parekulam Buildings, Collectorate Jn., Kottayam  
Tel: 0481 2563654, 2563456, 2562622  
Mob: P.P. Radhakrishnan - 94471 83671  
Joy Varghese - 94477 92622  
Technical Support: V.T. Vijayan - 94477 23819  
E-mail: mmchandyktm@gmail.com  
Website: www.mmchandytyres.com
- Kallooparambil Building, Pallom, Kottayam  
Tel: 0481 2431226  
Mob: +91 9447010051  
E-mail: mmchandypallom@gmail.com
- Sabha School Cross Road, Kozhikode  
Tel: 0495 2724739, 90375 71444  
Mob: Shajai Lal K.S. - 94477 24158  
Saneesh James - 94470 89563  
E-mail: mmchandycalicut@gmail.com

- Beach Road, Kollam  
Tel: 0474 2742944  
Mob: +91 94471 74294  
E-mail: mmchandykollam@gmail.com
- Ramanchira, Thiruvalla  
Tel: 0469 2606917  
Mob: +91 9447186907  
E-mail: wincotreads@gmail.com



### MIDAS TREADS INDIA PVT. LTD.

Midas Marketing Building  
Varissery Junction, Mariathuruthu P.O.  
Kottayam - 686 017, Kerala, India.  
Phone: 91-481-2561215  
E-mail: sales@midastreads.com (Domestic Division)  
manoj@midastreads.com (Export Division)  
Website: www.midas.co.in

### CUSTOMER CARE

E-mail: customercare@midastreads.com  
Sivaramakrishnan M. +91 9495686786  
Ramachandran K. +91 9495656151